



PROPERTY
SERVICES
LIMITED



155 Earlsdon Avenue North

Earlsdon, Coventry, CV5 6GN

£750 Per Calendar Month



Luxury Studio-Style Lux-Suite in Earlsdon – Available Now

£750 PCM | ALL BILLS INCLUDED | SINGLE OCCUPANCY ONLY

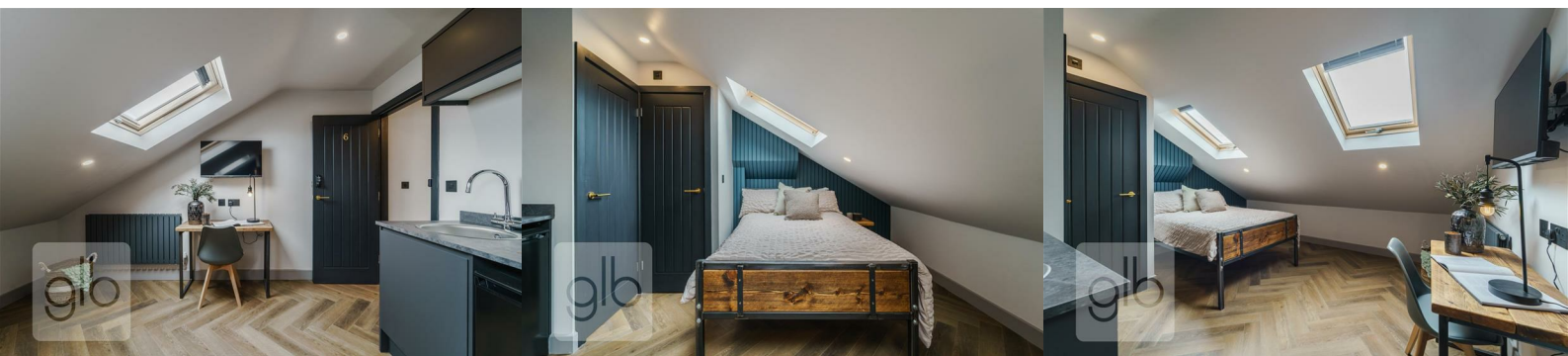
Looking for a little luxury in one of Coventry's most sought-after areas?

This beautifully designed Lux-Suite (a reimagined version of an en-suite) is located in the heart of Earlsdon, Ideal for Coventry train station, moments from Earlsdon High Street, and ideally situated for Warwick & Coventry University.

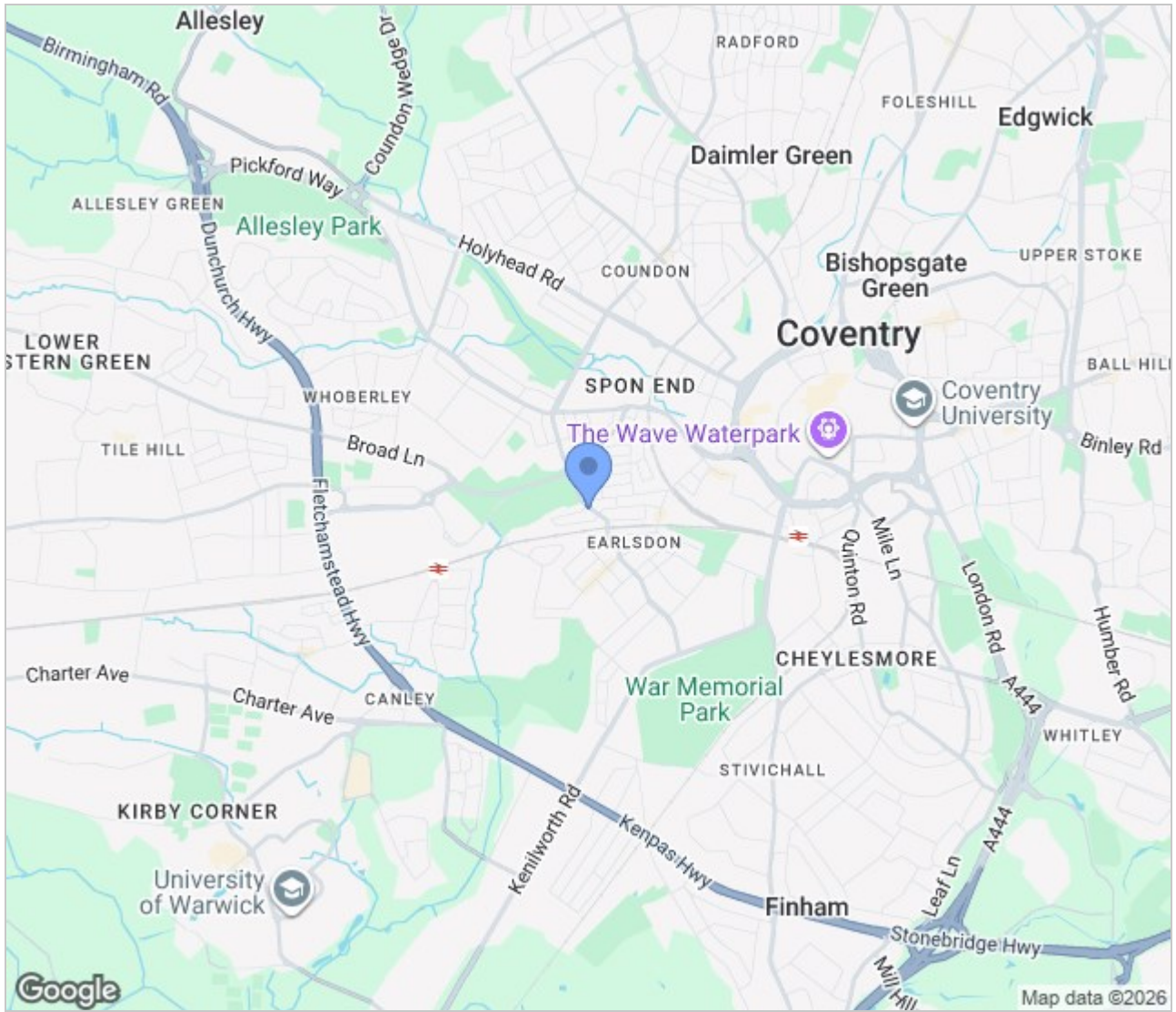
Lux-Suite Features:

- *Compact kitchenette featuring Microwave, Sink, Under-counter fridge
- *Dedicated workspace with desk & chair
- *Sleek, modern shower room with tiled finish

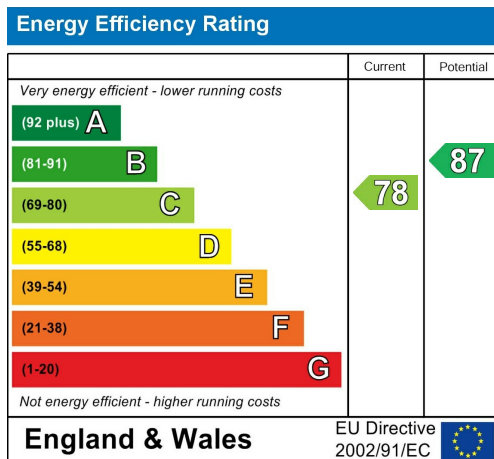
Communal Amenities:



Area Map



Energy Efficiency Graph



These particulars, whilst believed to be accurate are set out as a general outline only for guidance and do not constitute any part of an offer or contract. Intending purchasers should not rely on them as statements of representation of fact, but must satisfy themselves by inspection or otherwise as to their accuracy. No person in this firm's employment has the authority to make or give any representation or warranty in respect of the property.

GLB Property Services Ltd
9 Hay Lane
Coventry, CV1 5RJ

T. 02476 433416

info@glbpropertyservices.com
www.glbpropertyservices.com

